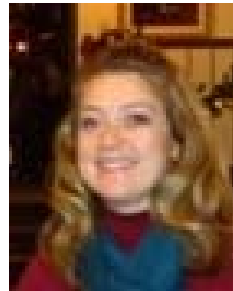


## Letter from the President

### New Year, New You...New EWI?

Each year, we look ahead to new beginnings, better health, and planning for success in the year to come. History would tell us that anyone who plans for such events most likely sets goals that they want to achieve in the hopes that, if they achieve their goals, their vision will be realized. This same situation is facing EWI as an organization as we look to 2012, as a chapter, and as a collaborative organization.



This upcoming month for our January program, we are going to be sharing some of the new ideas, processes, features and methods that our organization is using to strengthen, diversify, and energize our memberships within EWI. We will learn more about our new social networking and connecting tool MyEWI ([my.ewiconnect.com](http://my.ewiconnect.com) – *be sure to log in before Dec 31, so our Chapter wins the gift card award from Corporate!*), the corporate board structure for 2012, changes to our EWISP Scholarship Program, using electronic registration through Constant Contact, and our schedule of events for the 2012 Programming year. We encourage all member representatives from our chapter to attend as the evening will be packed with information for you to absorb and provide feedback on. We look forward to seeing you there on Tuesday, January 10 (more program information is found in this edition of the Connect).

We can't continue to look forward without realizing where we have come from, and where we are today. I would like to thank our life and sustaining members who were able to schedule time to attend our membership meetings in November and December. Your presence alone keeps our chapter grounded, while remembering the many volunteer hours given over time to keep our Milwaukee members thriving in their membership, and accomplishing the goals we set out achieve. Thank you for your continued dedication to EWI of Milwaukee and providing us with insight, sage advice and feedback!

In addition, we'd like to thank Jane Lawler and Fuchs Business Solutions for allowing our chapter to host our holiday meeting at Westmoor Country Club. The feedback from our meeting survey was unanimous delight for the atmosphere, the food, and the philanthropic opportunities to give during the holidays. Kudos to the Program Committee for a job well done!

What New Year would be complete without a New Year's Resolution? Not a one...so, I would like to share my resolution with you. **Working as a Team, Together Everyone Achieves More.** It may be a cliché, however, the input, time, volunteer hours, vision, action, dedication, passion, opinions, heart and gifts that we all share with EWI are much better utilized when we are all working together to move our chapter ahead. I look forward to what you can all help contribute this year and I know we will accomplish great things doing it together.

To A New Year, My Best Wishes for You, Your Firms and Your Family –

**Cortney Ewald-Ihde**  
Ewald Automotive Group  
Chapter President  
[cihde@ewaldauto.com](mailto:cihde@ewaldauto.com)

## 2011-2012 Officers & Directors

**PRESIDENT**  
**Cortney Ewald-Ihde**  
Ewald Automotive Group



**VICE PRESIDENT/  
PRESIDENT ELECT**  
**Mary Caye Smith**  
SalesSmith Inc.



**SECRETARY**  
**Mary Burns**  
Major League Baseball



**TREASURER &  
COMMUNICATIONS DIRECTOR**  
**Jess Beyer**  
The Schroeder Group, S.C.,  
Attorneys at Law



**MEMBERSHIP DIRECTOR**  
**Loren Skerencak**  
The Krizek Group  
Northwestern Mutual



**SERGEANT-AT-ARMS**  
**Shannon Lutze**  
Amerprise Financial



**PROGRAM DIRECTOR**  
**Debbie Knepeke**  
Nonprofit Center of Milwaukee  
Inc.



**WAYS & MEANS**  
**Sherri Povolio**  
Crowne Plaza Milwaukee West



**EWISP DIRECTOR**  
**Kathy Marchant**  
Olympus Group



**ASIST DIRECTOR**  
**Ginny Czarnecki**  
Mueller Communications



**BOARD ADVISOR**  
**Rocky Theisen-Kapp**  
Johnson Controls



### Inside this issue:

President's Letter & Board Listings	1
Chapter Reports & News	2-3
Firms News	4-9
December Membership Meeting	10
Corporate News	11
Professional Development	12
Milwaukee Chapter Firms	13

## MEMBERSHIP REPORT

### EWI Milwaukee Chapter has:

- 40 Member Firms
- 41 Representatives
  - 3 Lifetime Members
  - 3 Sustaining Members
  - 1 Member in Transition

### Postings:

The following firms have been approved for posting.

Burbach Insulation Co., Inc.  
Major: Insulation Materials  
Minor: Insulation & Fireproofing

The Delafield Hotel  
Major: Hotels & Resorts  
Minor: Boutique

Journal Broadcast Group  
Major: Broadcasting Radio  
Minor: Radio - FM

Any objections to this posting must be made in writing by your executive on firm letterhead to the **Chapter President, [Cortney Ewald-Ihde](#)**, within **10** days of the posting or receipt of this newsletter.

## DATES TO NOTE:

**January 10, 2012 @ 5:30 p.m.**  
[Membership Meeting](#)  
Program: The Evolution of EWI and  
What It Means to You  
Venue: Marcus Center for the  
Performing Arts

**January 17, 2012 @ 7:30 a.m.**  
Board of Directors Meeting  
Crowne Plaza Milwaukee West

**February 7, 2012 @ 5:30 p.m.**  
Membership Meeting  
Program: Stop Telling and Start Asking:  
Learn How to Lead by  
Asking the Right Questions  
&  
Heartfelt & Handmade Raffle  
Venue: The Hamilton

**February 14, 2012 @ 7:30 a.m.**  
Board of Directors Meeting  
Crowne Plaza Milwaukee West

**March 5, 2012 @ 5:30 p.m.**  
Membership Meeting  
Program: TBD  
Venue: Milwaukee Public Museum

**March 12, 2012 @ 7:30 a.m.**  
Board of Directors Meeting  
Crowne Plaza Milwaukee West

[Click here to review past  
Board Meeting minutes](#)

Members are welcome to attend the Board Meetings.  
Please contact [Cortney Ewald-Ihde](#) to reserve a seat.  
(dates are subject to change)



## 2012 Scholarship Committees Annual Appeal

for

### SCHOLARSHIP GOODY BAG ITEMS

*It's never too soon to set something aside for spring!*

As the EWISP and ASIST committees begin plans for the 2012 scholarship programs, we want to get our advance notice out and ask for your help in obtaining promotional items from your firm to include in our "goody bags" for the three EWISP scholarship recipients and the three ASIST scholarship recipients (6 total). Assorted items such as pens, pen sets, portfolios, key chains, T-shirts, post-its, etc. are appropriate. With fewer bags to fill, please consider supporting the event with a few higher end items if possible. Keep in mind that these items do not have to be identical. However, any contribution you are able to make is appreciated. Please bring them to any upcoming meeting or we are happy to make arrangements for pick up.



Thank you from your EWISP and ASIST Committee chairs,

Kathy Marchant and Ginny Czarnecki



## Handmade and Heartfelt Raffle February 7, 2012

Join us on February 7, 2012 at The Hamilton to Celebrate EWI as the Charity! Donate heartfelt and handmade items to be raffled off to benefit our Chapter. Please contact [Sherri Povolo](#) if you have questions or would like to make arrangements to donate items prior to the membership meeting.

Thank you,  
Sherri Povolo  
Ways & Means Committee



## Brian Ewald Wins National Recognition for Community Service and Industry Accomplishments at [NADA Convention](#)



### **TIME AND ALLY FINANCIAL HONOR OCONOMOWOC DEALER**

(New York, NY, November 16, 2011) – The nomination of Brian Ewald, dealer at Ewald Chevrolet Buick in Oconomowoc, Wisconsin, for the 2012 TIME Dealer of the Year award was announced today by TIME.

Ewald is one of a select group of dealers from across the country who will be honored at the 95<sup>th</sup> annual National Automobile Dealers Association (NADA) Convention & Exposition in Las Vegas on February 4, 2012. The announcement of this year’s nominees was made by Kim Kelleher, worldwide publisher of TIME, and Tim Russi, executive vice president, North American Operations, for Ally Financial.

“Auto dealers have a tremendous impact on the vitality and strength of communities across the U.S.,” said Russi. “Ally is proud to support these extraordinary dealers who are truly making their communities better places to live and work.” As part of its support for the program, Ally will make charitable contributions to local community causes on behalf of all 50 nominated dealers across the United States. In addition, the 2012 national TIME Dealer of the Year winner will receive a \$10,000 contribution for a 501(c)(3) nonprofit organization of his or her choice. To celebrate the valuable contributions of dealers across the U.S., Ally has also launched a digital hub ([allybizhero.com](#)) featuring engaging content celebrating auto dealers and their philanthropic achievements.

The TIME Dealer of the Year award is one of the automobile industry’s most prestigious and highly coveted honors. Recipients are among the nation’s most successful auto dealers who must also demonstrate a long-standing commitment to community service. Ewald, 58, was chosen to represent the Wisconsin Auto & Truck Dealers Association in the national competition – one of only 50 auto dealers, from 17,000 nationwide, nominated for the 43<sup>rd</sup> annual award. The award is sponsored by TIME Magazine in association with Ally, and in cooperation with NADA. A panel of faculty members from the Ross School of Business at the University of Michigan selects one finalist from each of the four NADA regions and one national Dealer of the Year.

“The automobile business has provided me with an opportunity to teach my two children my passion and conviction for nurturing the human spirit and how that translates to enjoying my career, building a successful legacy and hoping they achieve the same in their futures,” says nominee Ewald.

Cortney Ewald– Ihde  
Ewald Automotive Group  
[www.ewaldauto.com](#)



## Saz's Gives Back!

Your holiday party will make others happier!

As part of the 2011 "[Saz's Gives Back](#)" program we are donating 5% of all December 2011 & January 2012 food and beverage sales from Saz's Catering to the Hunger Task Force.

We have selected Hunger Task Force as the recipient of this donation because of their significant work to provide food to the people of this community. Hunger Task Force is a meaningful local organization and as a local business we are really happy to partner with them this holiday season.

Lisa Frechette  
Sazama's Fine Catering  
[www.sazamas.com](http://www.sazamas.com)



## The American Cancer Society Daffodil Days®

The bright, yellow daffodil is the American Cancer Society's symbol of hope in the fight against cancer. Because the American Cancer Society's daffodils are fresh and colorful, Daffodil Days has become a successful fundraiser in the upper Midwest, where winters can be long, unpredictable, and a sign of spring is always welcome!



Daffodil Days is a fun and easy way to get involved with the American Cancer Society. Orders and donations are taken in December, January and through February 13, 2012 for various Daffodil Days products.

The fresh daffodils are delivered during the week of *March 12-16, 2012*.

Contact Laurie Rappa at the American Cancer Society, (262) 523-5556 or [laurie.rappa@cancer.org](mailto:laurie.rappa@cancer.org) for additional information about how you can participate in Daffodil Days and create a world with less cancer and more birthdays.

Laurie Rappa  
American Cancer Society  
[www.cancer.org](http://www.cancer.org)



Susan Cota  
 United Way of Greater Milwaukee  
[www.unitedwaymilwaukee.org](http://www.unitedwaymilwaukee.org)



**\$50,006,076**

Together we did it! On December 13 at its Closing Celebration hosted at We Energies, United Way of Greater Milwaukee announced that it raised a milestone \$50,006,076 for the community! United Way exceeded its \$48 million projected goal by more than \$2 million, the largest year-over-year increase in 10 years.

The community's generous support allows United Way of Greater Milwaukee to help more than 400,000 people in 2012 by strategically funding 160+ programs in education, income and health at over 80 local agencies.

**WINTER FEST**

United Way of Greater Milwaukee is partnering with Winter Fest on an educational field trip on December 10. 5,000 young readers in Live United shirts will break the Guinness World Record for reading with an adult participating in the Read It to Beat It Guinness World Record Event at Winter Fest. Celebrity readers include Ryan Grant of the Green Bay Packers, former Milwaukee Brewer Craig Counsell, Mayor Tom Barrett and Betsy Brenner, publisher of the Milwaukee Journal Sentinel.

**INFANT MORTALITY**

As part of United Way of Greater Milwaukee's Health strategy, reducing infant mortality is a priority in 2011 and beyond by establishing the Healthy Birth Initiative: Reducing Infant Mortality. In November, United Way awarded funds to fight infant mortality to the following programs: The inter-conception Care Home Visiting project – a pilot partnership between Aurora Family Service, Dr. Tina Mason and Aurora Sinai Medical Center, as well as the Sixteenth Street Community Health Centers' Infant Safety Project; and additional programs through the Center for Urban Population Health and Milwaukee Health Department.

**Kiss your lips with moisture!**

**Mary Kay NouriShine Plus Lip Gloss \$14**



Donna Munnik  
 Independent Sales Director  
[Mary Kay](http://www.MaryKay.com)  
[dmunnik@wi.rr.com](mailto:dmunnik@wi.rr.com)  
 414-423-0224

In every swipe, you get:

- An instant boost of moisture to your lips.
- Smoothed, protected and conditioned lips.
- Ultraglossy shine in a range of finishes.
- Good-for-your-lips ingredients like antioxidants and botanical extracts.

Shop [online](#) today!

**MILWAUKEE ACHIEVER LITERACY SERVICES NAMES EXECUTIVE DIRECTOR**

Milwaukee Achiever Literacy Serves, a nonprofit adult literacy and workforce development agency, welcomes Tracy Loken Weber as its new Executive Director. Ms. Loken Weber, will lead the agency beginning on January 1, 2012, and brings years of education and adult literacy experience with her. Prior to this position, Ms. Loken Weber was the Programs Director for the agency. “Tracy was chosen as the next executive director based on her knowledge, experience, and unwavering commitment to the organization’s mission for the past six years,” stated board chair, Pamela Schopf. “The board of directors is confident that her expertise and leadership capabilities will help make Milwaukee Achiever the premier literacy and workforce development agency in the community.”

Tracy Loken Weber has an extensive background in education, workforce readiness and curriculum development, and instructional technology; experience and skills used to enhance the programming at Milwaukee Achiever. Ms. Weber is a strong advocate for adult literacy and holds multiple leadership positions locally, statewide, and nationally. She is the Past President for the Literacy Coalition of Southeastern Wisconsin, Board Director for Wisconsin Literacy, member of Association of Adult Literacy Professional Developers, and serves on the ProLiteracy President’s Advisory Council.

As Executive Director, Ms. Loken Weber will oversee the organization’s mission to provide education, life skills training and workforce development instruction for educationally and economically disadvantaged adult learners. During fiscal year 2010-2011, Milwaukee Achiever provided services to over 1,900 individuals at our community learning centers. Adult learners received 40,491 hours of instruction provided by volunteer tutors and staff in the following areas: Adult Basic Education (ABE), General Educational Development (GED), High School Equivalency Diploma (HSED), English as a Second Language (ESL) and English Language Learning (ELL), Computer Literacy, Citizenship Preparation, Mount Mary College in the Community College Preparatory program, and Workforce Literacy (including the Bilingual Medical Interpreter (BMI), JobLink, and Accelerated GED/Workplace Readiness training).

Milwaukee Achiever Literacy Services, a non-profit 501 (c)(3) organization, is an adult literacy program founded in 1983 by Alverno College, Cardinal Stritch University, and Mount Mary College, which are sponsored by the School Sisters of St. Francis, the Sisters of St. Francis of Assisi, and the School Sisters of Notre Dame, respectively. Milwaukee Achiever is the only adult literacy organization in the Greater Milwaukee area accredited by ProLiteracy, a nonprofit educational organization that evaluates and supports literacy organizations across the country and around the world.

## Milwaukee Achiever Literacy Services



welcomes

### Tracy Loken Weber

EWI Member

as its new

### Executive Director

## Congratulations!



Real People. Real Learning. Real Life.

# CORPORATE DISPLAYS



Showcase your abilities and special projects right in your own office!  
What better way to show your work to potential customers?

By working with installers across the country, we ensure the quality of your custom office display from artwork to installation.

Kathy Marchant  
Olympus Group

[www.olympusgrp.com](http://www.olympusgrp.com)



Cubicle Covers



Stand-off Wall Decor



Wall Murals

Imagine It. Done.

[sales@olympusgrp.com](mailto:sales@olympusgrp.com)



# RING IN 2012...

*with an evening to remember*

AT THE  
CROWNE PLAZA  
MILWAUKEE WEST



*celebrate* with us at our  
New Year's Eve party featuring music by  
**Cold Sweat and the  
Brew City Horns**

Enjoy an inspired gourmet spread including  
fresh seafood, carved-to-order prime rib,  
open bar\*, late-night hors d'œuvres,  
party favors and champagne toast.

Stay the night and join us for breakfast  
and an extended 2pm check-out

**\$199**  
party only

**\$289**  
party, stay & breakfast

Price per couple. \*2 1/2 hour open bar. Price includes tax  
and gratuity. Stay an additional night for only \$69.  
Must be 21 or older to attend.

*for reservations*

Call 414 475 9500 to book your  
New Year's Eve event with us

10499 INNOVATION DRIVE | WAUWATOSA, WISCONSIN 53226 | 414 475 9500 TEL | 414 475 9559 FAX  
WWW.CROWNEPLAZAMILWAUKEE.COM



## NEW YEAR'S EVE... JUST THE TWO OF YOU

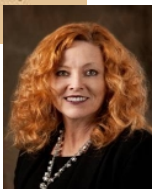
Celebrate with a more exclusive ambience at Innovation -  
and ring in the New Year with a romantic dinner for two.

**\$89<sup>95</sup>**

RESERVATIONS 414-259-0793 | INNOVATIONRESTAURANT.COM

per couple, plus tax and gratuity

Sherri Povolo  
Crown Plaza Milwaukee West  
[www.crowneplazamilwaukee.com](http://www.crowneplazamilwaukee.com)



**There was much to celebrate and a little business to take care of at the EWI Milwaukee Membership meeting on December 6, 2011 at Westmoor Country Club.**

Members generously donated items for the [Toys for Tots](#) and [The Holiday Giving Tree](#) program. Sherri Povolo, Ways and Means Director, recruited a few good men from the Marines who were welcomed at the meeting to provide some history on Toys for Tots and load toys into their sleigh for delivery this holiday season. The deep pockets of our firms and members also delivered their personalized gifts for The Holiday Giving Tree. Debbie Knepe, Nonprofit Center of Milwaukee, had her arms and vehicle full at the end of the evening to whisk gifts away to agencies in need. After everyone was nestled comfortably in their seats, members and guests enjoyed a wonderful meal that involved some discussion about EWI's budget.

Maybe not the most exciting of topics to discuss during the holidays, but there were a few items that members needed to know about for 2011-2012 budget year. EWI Corporate initiated some adjustments to the EWISP scholarship program which were communicated with membership. Please refer to previous [Corporate Connects](#) to read about the changes to the EWISP program. This change allowed for an enhancement to the Milwaukee Chapter's budget in that the ASIST and EWISP programs will now be a combined event allowing for additional opportunities for programming. Along with this advancement in programming, the board investigated options for improving technology for membership by proposing the use of Constant Contact. Constant Contact will allow for a more streamlined registration process, better management of communications and surveys to make board responsibilities a little less taxing and possibly more appealing to other members. In addition, Constant Contact will provide ease for members to share information about EWI Milwaukee with those outside of our Chapter.

Thank you to EWI Members for their generosity this holiday season and having trust in your Board by approving the 2011-2012 budget.



Tracy Loken Weber, Milwaukee Achiever Literacy Services and Lisa Cohen Heritage Printing



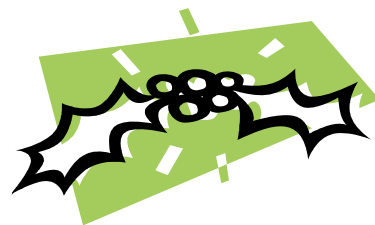
Making connections: Susi Schuele, My Virtual Project, Donna Munnik, Mary Kay, Mary Caye Smith, SalesSmith and Debbie Knepe Nonprofit Center of Milwaukee, Inc.



Lori Skerencak, The Krizek Group and Cortney Ewald-Ihde collecting items for Toys for Tots



A word from the Marines regarding the history of Toys for Tots in the warmly decorated meeting room at Westmoor.



Cortney Ewald-Ihde, Chapter President, helps the Chapter celebrate December Birthdays: Jess Beyer, The Schroeder Group, Attorneys at Law, Kathy Marchant, Olympus Group, Michelle Strobel, Briggs & Stratton and, Linda Sauntman, Life Member



Admiring the generosity of EWI Members: Kathy Schnagl, Prescott Miller Jewelers, Shannon Lutze, Ameriprise Financial and Karyl Richson, Social Security Administration



**Corporate Office**

7414 South State Street, Midvale, UT 84047  
Toll Free 1.877.4EWI-NOW



**"Logged In" Competition**

During the month of December EWI Corporate is having a competition to see which Chapter can get the highest percentage of their chapter members to log in to MyEWI.

To confirm your participation in this competition, post a comment including your chapter name in the ["Logged In" Competition Forum!](#)

The winning chapter will receive a gift card.

Let the competition begin!

**Corporate Office Serving EWI Membership**

The Corporate Office deepens its commitment and level of service to EWI. We commit to 24-hour turnaround in email reply and answering voice messages, unless the office is closed or the person you need to reach is out for the day.

**Lynne Shaffer**, Executive Director  
**Melissa Menatti**, Operations Manager  
**Shannon Glaittli**, Administrative Assistant

Office hours: 8:00 am - 5:00 pm  
**Closed Monday, December 26**  
**Closed Monday, January 2**  
Email: [ewi@ewiconnect.com](mailto:ewi@ewiconnect.com)  
Phone: 801.355.2800  
Address: 7414 S. State Street, Midvale, UT 84047

[WWW.EWICONNECT.ORG](http://WWW.EWICONNECT.ORG)

**2011/2012 Corporate Board**

**President**

**Lisa Stokes**

EWI of Harrisburg  
B.R.P. Entertainment

**Vice President /President-Elect**

**Karen Skirten**

EWI of Calgary  
TierOne Travel

**Treasurer**

**Kerry Feltenberg**

EWI of Phoenix  
Arizona Grand Resort

**Director**

**Cindy Hillegass**

EWI of Minneapolis  
Dalco Roofing & Sheet Metal, Inc.

**Director**

**Nancy Harrison**

EWI of Chattanooga  
Everything Just So

**Director**

**Carolyn Woodmansee**

EWI of Spokane  
Washington Trust Bank

**Secretary**

**Darlene Banogon**

EWI of San Diego  
North Island Credit Union

**Advisor**

**Sharon Bennett**

EWI of Cincinnati  
Lifetouch

**Executive Director**

**Lynne Shaffer**

**EWI® MISSION AND VISION  
MISSION**

Executive Women International® is an organization which brings together key individuals from diverse businesses for the purpose of:

- Promoting member firms
- Enhancing personal and professional development, and
- Encouraging community involvement

**VISION**

To be the leading connection for business professionals.

## Dates to note that will enhance your EWI Membership!

### Register for Upcoming Webinars:

#### Leadership Professional Development Webinar:

Leadership as it Relates to Change  
Tuesday, January 10, 2012  
Presenter: Colette Carlson  
Registration Details Coming Soon...

### Watch Webinar Recordings:

[MyEWI: The Basics](#)

[Building Trust in the Workplace](#)

[New Member Orientation](#)

[How to Communicate Effectively with a Virtual Team](#)

Click for the Most Recent EWI Corporate Connect  
[December EWI Corporate Connect](#)

### Conferences:

**March 29-31, 2012**  
**Spring Conference**  
**Richmond, VA!!**

**September 13-15, 2012**  
**SAVE THE DATE!**  
65th LCAM in Dallas, Texas

## EWI Milwaukee Courtesy Corner

Member to Member information regarding professional development books, articles and events.

### Books:

[Business Etiquette & Protocol: Professional Development Series](#)

Carol Bennett

### Articles:

[Perpetual Mastery of Technology](#)

Adminology: Joan Burge

### Events:

[City of Milwaukee's 166th Birthday Party](#)

January 31, 2012 5:30pm-8:00pm

Grain Exchange

Please send information about professional development events, articles and books to the [Communications Committee.](#)

## EWI MILWAUKEE MEMBER FIRMS

Member Firm	Representative	Member Firm	Representative
<a href="#">1st Choice Heating &amp; Cooling</a>	Suzanne Ginter	<a href="#">Mary Kay Cosmetics</a>	Donna Munnik
<a href="#">American Cancer Society</a>	Laurie Rappa	<a href="#">Metropolitan Milwaukee Association of Commerce</a>	Bonnie Gomer
<a href="#">Ameriprise Financial</a>	Shannon Lutze	<a href="#">Milwaukee Achiever Literacy Services</a>	Tracy Loken Weber
<a href="#">Badger Meter Inc.</a>	Mary Herauf	<a href="#">Mueller Communications</a>	Ginny Czarnecki
<a href="#">Better Business Bureau of Wisconsin</a>	Liz Fredrichs	<a href="#">My Virtual Project, LLC</a>	Susi Schuele
<a href="#">Briggs &amp; Stratton Corporation</a>	Barb Benish Michelle Stroble	<a href="#">New Resources Consulting</a>	Emily Phillips
<a href="#">Building Efficiency Group JCI</a>	Pat Swilley	<a href="#">Nonprofit Center of Milwaukee Inc.</a>	Debbie Knepke
<a href="#">Building Service, Inc. (BSI)</a>	Lori Torrison	<a href="#">Oldenburg Group Incorporated</a>	Linda Werth
<a href="#">Charter Manufacturing</a>	Lisa Fairweather	<a href="#">Olympus Group</a>	Kathy Marchant
<a href="#">Colleen Horner Kitchen Bath Tile &amp; Stone</a>	Katie Knutson	<a href="#">Prescott Miller Jewelers</a>	Kathy Schnagl
<a href="#">Crowne Plaza Milwaukee</a>	Sherri Povolo	<a href="#">RCB Awards</a>	Cindy Denevan
<a href="#">Ewald Automotive Group</a>	Cortney Ewald-Ihde	REL:EVENT Meeting and Event Solutions	Kat Hughes
<a href="#">FedEx SmartPost</a>	Stephanie LaMarque	<a href="#">Riteway Bus Service, Inc.</a>	Rochelle Bast
<a href="#">Fitness Advantage Trainer</a>	Jaime Wooten	<a href="#">SalesSmith Inc.</a>	Mary Caye Smith
<a href="#">Flower Lady Fine Flowers &amp; Gifts</a>	Deb Karpfinger	<a href="#">Saz's Catering Inc.</a>	Lisa Frechette
<a href="#">Fuchs Business Solutions Inc.</a>	Jane Lawler	<a href="#">The Schroeder Group, S.C., Attorneys at Law</a>	Jessica Beyer
<a href="#">Heritage Printing</a>	Lisa Cohen	<a href="#">United Way of Greater Milwaukee</a>	Sue Cota
<a href="#">Indiana Insurance</a>	Cindy Kunze	<a href="#">Social Security Administration</a>	Karyl Richson
<a href="#">Johnson Controls</a>	Roxane Theisen-Kapp	<a href="#">UW-Milwaukee College of Nursing</a>	Julie Frey
<a href="#">Krause Funeral Home &amp; Cremation Services</a>		<a href="#">We Energies</a>	Sharon Fryjoff
<a href="#">The Krizek Group</a>	Loren Skerencak	<a href="#">Wildtree</a>	Lyn Woppert
<a href="#">Major League Baseball</a>	Mary Burns	<a href="#">YMCA of Metropolitan Milwaukee</a>	Yili Cao
		Member in Transition	Karen Pelczynski

### ***ROSTER UPDATES***

If you have new firm information or have a new executive, please be sure to update Mary Burns at [mary.burns@mlb.com](mailto:mary.burns@mlb.com) to ensure our Roster stays up to date.